

# RAIL SYSTEMS



Item	Count	Value
Hand Towels	187	450
Wash Cloths	82	180
Pillow Cases	120	180
	0	450

Production by Zone									
2 AM	3 AM	4 AM	5 AM	6 AM	7 AM	8 AM	9 AM	10 AM	11 AM
3,600	2,072	3,505	2,424	2,857	2,091	3,000			

Appl. Category	Count	Value
Perkins Cotton	20	4,910
North Beach	17	5,780
Washington Beach	52	5,700
North Beach	44	7,900
RAIL Set Up Day	2	410

## Softrol Rail Systems: Improving efficiency

As part of Total Plant Management, which focuses on plant efficiencies and maximum performance, Softrol offers state-of-the-art rail systems for both soil and clean goods transfer, as well as material handling for the wash aisle. These systems increase efficiency while minimizing manual labor. Softrol offers hardware and software designed to integrate with existing automation for soil and clean rail systems. Each rail system is custom engineered to fit your facility and production needs with the goal to reduce your time, space and labor requirements. Manual, semi-automated and fully automated rail systems are complemented by our software, a critical part of the Total Plant Management Suite.

### Peace of mind for your Mission Critical System

Utilizing the same control platform as our successful automated sorting product line and cutting edge industrial design, Softrol's rail systems offer long life with optimum payback on your investment. Our unique use of round melonited rail for an optimal automation framework combined with our unparalleled commitment to customer satisfaction sets us apart from other manufacturers.



Monitor product flow and production pace



Distributed control platform for control isolation

Sort-on-rail for streamlined soil sorting



Continuous or non-continuous sort options



# RAIL SYSTEMS

## The Right Rail system for your plant

Softrol offers a broad range of rail systems to meet your specific needs including:

### Sort-On-Rail Solution

For optimum operator efficiency, a Sort-On-Rail system allows operators to use gravity to sort directly into slings that are on the monorail system. This automated solution streamlines the soil sort process and provides feedback to operators for load details, sorting instructions and load size for optimal sling loading and production throughput. SmartStation touchscreens are provided at each operator station to give performance feedback and item pictorial for bin. Depending on sort volume, the continuous sort or non-continuous sort option can be utilized.



SmartStations provide the operator performance information

### Continuous Sort Option

A storage hopper holds sorted linen during a sling exchange. This hopper is designed to prevent linen jams and spillover. This option is ideal for high-volume facilities where continuous sorting is required. The continuous buffer chute holds approximately two thirds of sling capacity.

### Non-Continuous Sort Option

Items are sorted directly into the sling until the desired weight is reached. The sling must be exchanged for sorting to continue.

## More rail solutions available from Softrol:

- Bin to belt
- Load on rail
- Cart sort
- Dryer loading system
- Clean delivery system
- Route holding system
- Cart dumpers
- Break up tables
- Conveyors
- Carts
- Wind up fold tables
- Impact tables
- Auto bulk loading conveyor
- Underguarding

## Round Rail

Softrol's rail systems offer industrially hardened mechanical designs for smooth operation and maximum resistance to wear. The smooth rail is ideal for automation because slings travel on the rail smoothly for optimum rail performance with less operator involvement. Only Softrol rail systems use melonited rail, hardened and melonited stop sections, and industrial size casted trollies/load bars. The meloniting process eliminates nearly all rail distortion for smooth and quiet operation. Round rail is easier on bearing and switches. Our rail systems offer practical designs and a high degree of redundancy for interchangeability of parts across the whole system.





Melonited rail for smooth transfer



Trolley twister switch reduces overall floor space requirements

### Trolleys and Switches

Our unique trolley twister switch design reduces the overall floor space requirements. Twister rail components are ideal for tight areas and provide for better plant layout options. Additional unique switch designs allow slings to be stored directly on the switch so that empty slings are optimally placed in the sort arrangement.



Distributed control platform provides peace of mind for mission critical systems

### Controls

Softrol rail automation utilizes a networked and distributed control system with modular components. The distributed control platform and modular components isolate control failures to one area.

Distributed Control Platform provides:

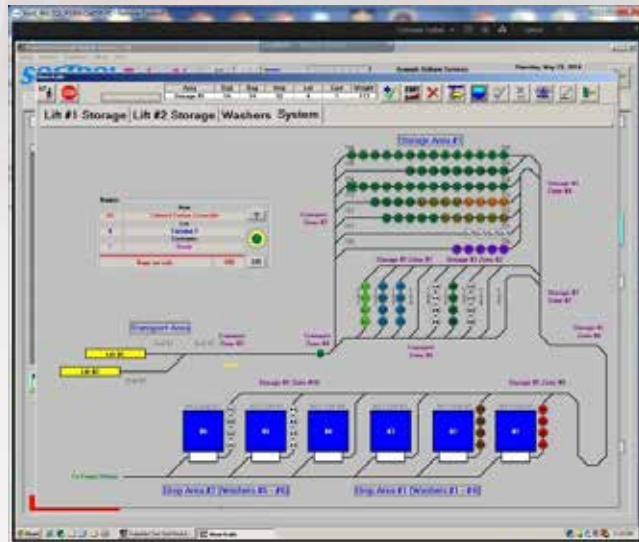
- Simple implementation
- Improved reliability for peace of mind that a "mission critical" process has been designed to minimize failure
- Easier preventive maintenance on sections of the system without taking the whole system down
- Softrol manufactured components for quality control and life cycle control - key to capital investments

### Software

The rail software handles integrated equipment communication, optimized production routing and load tracking. With advanced system diagnostics capabilities, system monitoring and data capture for analysis; production risk areas can be identified early.

Reports include: Production By Item, Day, Lot, Customer, Bags/HR. This can be measured for lifted or dropped bags in terms of pounds or bags.

Softrol provides an electronic data interface that allows remote data collection across multiple sites for corporate measurements. The data is available in xml format the industry standard for corporate reporting.



Rail software handles production routing and load tracking

### Other Rail Capabilities

Softrol can re-control existing rail systems of all types such as semi-automated, T-Rail or monorail. From semi-automated retrofits for control of the destination rail and/or unloading of bags at washers to a fully automated rail system retrofit, Softrol offers the best solution for your plant.



Rail status for identification of goods in pipeline to be processed



Touchscreen operation reduces training time



Electronic capture of sling weights

### PVRM- Virtual Rail

Virtual rail is process control for manual rail and cart systems. PulseNet Virtual Rail Manager (PVRM) is a hardware and software package that can be added onto a manual rail system to deliver actionable information for better process control. The system restricts out of standard sling weights for improved wash aisle efficiency.

#### Features and Benefits

- Touch screen operation reduces operator training time
- Electronic capture of soil slings, ensures accurate sling weights and reduces wash loads per day
- Lift lockout for incorrect weight
- Provides real time information on item, lot, and weight in soil storage
- Electronic data feeds for corporate level reporting
- RFID Solution provides 100% accuracy to multiple plant soil rail configurations
- Web-based reporting provides access to production from anywhere with an internet connection
- Lift disable improves wash aisle efficiency due to proper soil weights
- Reporting provides historical soil weight history for production and service planning and management
- Self managing system delivers improvement without additional management time
- Automatic loading helps with tunnel efficiency and safety (no cart loading)
- Preloaded and pre-weighed saves labor from manual cart loading



Lift lock-out for incorrect weights

#### Service and Support

- Toll-free, 24 hour, seven days per week support available
- Onsite plant services by a qualified Softrol technician
- Remote assistance available from PC to PC
- Remote broadband based service available
- Preventative maintenance inspection service programs
- Technical support service programs

#### Service and Support Benefits

- Reduced technical staff required
- Minimal risk of equipment downtime
- Predictable annual support costs



1100 Northpoint Pkwy SE  
Acworth, GA 30102  
770-974-2700  
www.softrol.com

